



DIMENSIONS

1640 x 2000 x 820mm

LITRES

590L

DRY WEIGHT

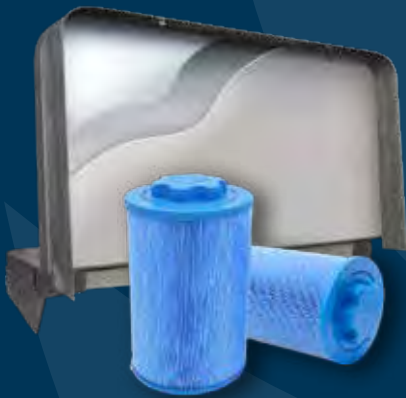
240kg

TOTAL WEIGHT

830kg

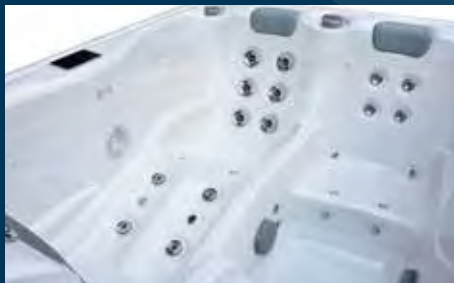
MINIMUM POWER

15 Amp Classic



PARADISE SERIES

Perfect for patios and balconies, the Paradise Classic is a compact luxury spa designed for those wanting maximum hydrotherapy but with limited space. *Classic Platinum pictured.*



CLASSIC

3 Seater Spa

PUMPS

1 x 3hp Massage Pump

1 x Filtration Pump

JETS

30 x Water Jets

FILTRATION & SANITISATION

100sqft Filtration

Ozone

CONTROLS

Gecko Touch Pad

3KW Stainless Steel Heater

FEATURES

5 Layer Insulation

Waterlevel LED's

Stainless Steel Jet Trims

Luxury Lockable Hardcover

Solid ABS Base

15 Amp

CLASSIC PLATINUM

3 Seater Spa

1 x 3hp Massage Pump

1 x Filtration Pump

Heated Air Blower

30 x Water Jets

16 x Air Jets

100sqft Filtration

Ozone with Mixing Chamber

Gecko Colour Touch Screen

3KW Stainless Steel Heater

7 Layer Insulation

Waterlevel LED's

Stainless Steel Jet Trims

Luxury Lockable Hardcover

Solid ABS Base

Backlit Controls

Cabinet Lighting

Heatpump Connections

3 x Roman Waterfalls

15 Amp



OPTIONAL EXTRAS

Steps | Ultra Zone | In.Touch Wi Fi | In.Stream Stereo | Heat Pump (Platinum Only)

ACRYLIC AND CABINET COLOURS

In addition to our acrylic's excellent gloss and colour retention, surfaces are naturally impervious to microorganisms. Oasis Spas are shielded against microbes, easy to clean and durable.

