



DIMENSIONS

3000 x 2300 x 970mm

LITRES

1980L

DRY WEIGHT

565kg

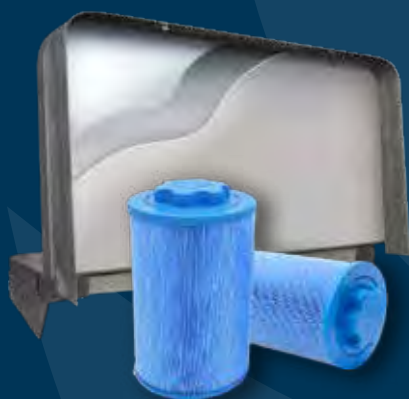
TOTAL WEIGHT

2925kg

MINIMUM POWER

32 Amp Hydro

32 Amp Pro



ISLANDER SERIES



The Islander is an extra-large spa with an open style 'hot tub' design that is perfect for hydro-massage, relaxation and entertaining with family and friends. *Pro Platinum pictured.*



HYDRO

9 Seater Spa

PUMPS

2 x 3hp Massage Pumps

1 x Filtration Pump

JETS

60 x Water Jets

FILTRATION & SANITISATION

100sqft Filtration

Ozone

CONTROLS

Gecko Touch Pad

3KW Stainless Steel Heater

FEATURES

5 Layer Insulation

Waterlevel LED's

Stainless Steel Jet Trims

Luxury Lockable Hardcover

Solid ABS Base

32 Amp

PRO PLATINUM

9 Seater Spa

3 x 3hp Massage Pumps

1 x Filtration Pump

Heated Air Blower

72 x Water Jets

12 x Air Jets

1 x Sole Therapy Jet

100sqft Filtration

Ozone with Mixing Chamber

Gecko Colour Touch Screen

3KW Stainless Steel Heater

7 Layer Insulation

Waterlevel LED's

Stainless Steel Jet Trims

Luxury Lockable Hardcover

Solid ABS Base

Backlit Controls

Heatpump Connections

3 x Roman Waterfalls

32 Amp



OPTIONAL EXTRAS

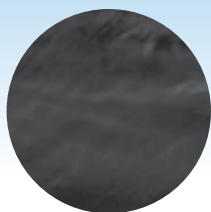
Steps | Ultra Zone | In.Touch Wi Fi | In.Stream Stereo | Heat Pump (Platinum Only)

ACRYLIC AND CABINET COLOURS

In addition to our acrylic's excellent gloss and colour retention, surfaces are naturally impervious to microorganisms. Oasis Spas are shielded against microbes, easy to clean and durable.



Sterling Marble



Midnight Opal



Ocean Wave
(Subject to Availability)



Slate Grey



Mocha