

# Discover Relaxation

The Oasis Supreme Range









## Treat yourself to a better way of living. You deserve it!

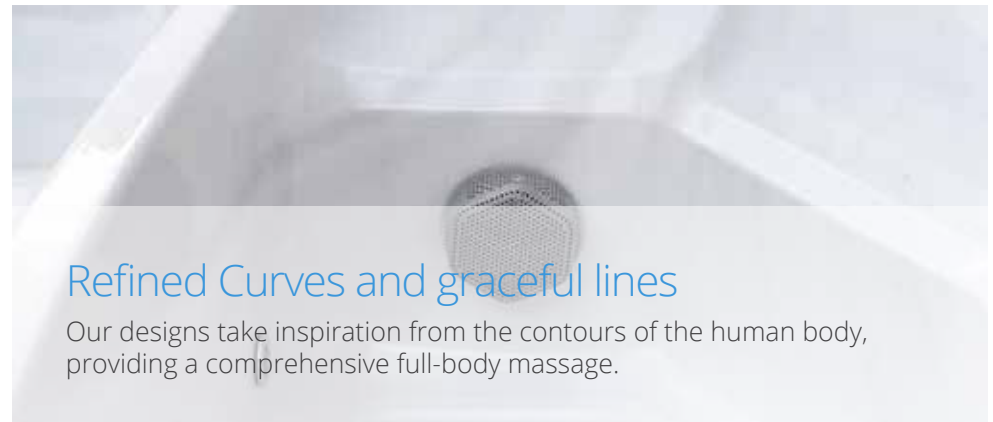
Welcome to the world of Oasis Spas, where luxury, quality, and relaxation unite in perfect harmony. Oasis Spas are more than just hot tubs; they are your gateway to a world of serenity, rejuvenation, and the ultimate lifestyle upgrade.

In this brochure, we invite you to explore the exceptional features, innovative technologies, and superior craftsmanship that make Oasis Spas a premium choice for discerning spa enthusiasts. Whether you seek a serene escape, targeted hydrotherapy, or a spacious retreat for quality time with loved ones, Oasis Spas has a solution tailored to your needs.

Join us on a journey through the extraordinary offerings of Oasis Spas and envision the transformation a luxurious spa can bring to your life. Welcome to the ultimate spa experience, designed to enhance your well-being and elevate your lifestyle.

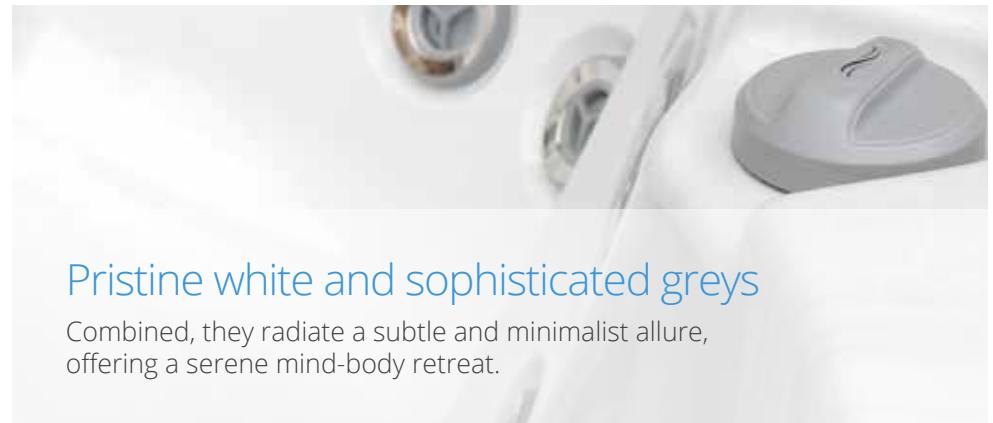


Cleverly crafted for  
the ultimate hydrotherapy  
experience



### Refined Curves and graceful lines

Our designs take inspiration from the contours of the human body, providing a comprehensive full-body massage.



### Pristine white and sophisticated greys

Combined, they radiate a subtle and minimalist allure, offering a serene mind-body retreat.



### A spa experience that prioritises safety

The security of you and your loved ones is ensured by the presence of a gentle, anti-slip tread, that is both resistant to chemicals and ozone.





## Ergonomic seating and smooth jets

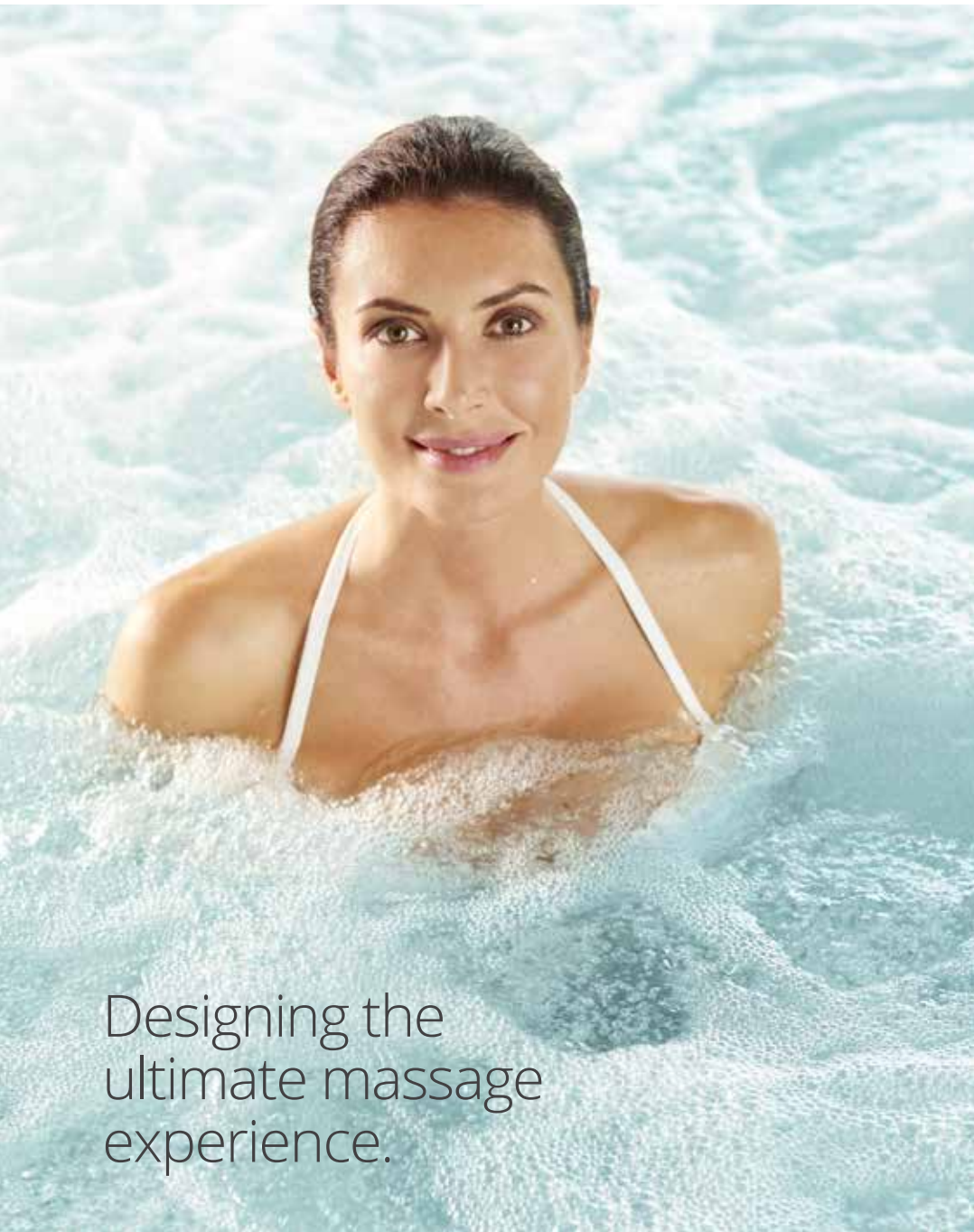
With over 30 years of expertise, guaranteeing enduring comfort during prolonged seating. Less wasted space along the spa's periphery results in increased interior room and heightened comfort. The spacious footwells provide ample foot space for all.

Our specially designed massage jets are created with your comfort as a priority. We've developed a seating arrangement with carefully planned jet placement to provide exceptional comfort.



## Ample room for enhanced relaxation and comfort

Conventional spas frequently feature unused space along the edges, restricting your capacity to fully relax and stretch out. At Oasis Spas, we uphold the principle of "More Room, More Comfort," ensuring you experience no confinement or discomfort. Extend your legs and settle into your preferred seating arrangement without constraints. Our meticulously crafted designs ensures an expansive interior, enabling you to thoroughly relish your hydrotherapy sessions. Despite our spas having a compact footprint, our focus on maximising space results in remarkably generous interiors for your utmost comfort.



Designing the  
ultimate massage  
experience.



## Harness the power of hydrotherapy

Oasis spas have merged precise massage techniques with a scientifically designed seating, delivering the established advantages of hydrotherapy and the invigorating effects of hydro massage. This involves the utilisation of pinpointed water jets to relax muscles, enhance circulation, and promote a sense of well-being.

Enhance your hydrotherapy journey with our high performance massage pumps. Ensuring a robust stream of water to envelop you in a calming spa experience.





# Diverse jet configurations allow you to create your own massage experience

Providing diverse massage experiences tailored to various seating positions, ensuring each spa user can enjoy a customized and relaxing hydrotherapy encounter.

1. Precision-crafted stainless steel hydrotherapy jets.
2. Each jet can be easily replaced and are interchangeable with jets of the same size.
3. Performing various actions, adjust each jet individually for a great targeted massage.



**2.5 Inch**  
Directional Jet



**3 Inch**  
Single Spin



**4 Inch**  
Single Spin



**5 Inch**  
Single Spin



## Full body recliner massage

Experience the pleasure of having up to 16 jets massage your entire body all at once - from your neck to your toes.



## Accupressure back massage

A number of accupressure jets are used in one seat to precisely target pressure points in the back and lower neck.



## Foot massage

With more nerves and muscles in your foot than anywhere else there's no doubt why everyone loves our foot massage jets

# Exceeding the world's highest energy standards

## Spa Daily Energy Cost (kWh)

3.65kWh

OASIS SPAS

4.96kWh

CEC STANDARD

## Test Conditions:

1. Fill tank with water at 15cm from top or center of skimmer spacing.
2. Use thermostat and circulation pump to heat water to  $39 \pm 1^\circ\text{C}$
3. Stable water temperature, ambient temp at  $17^\circ\text{C}$ , test for 72 hours. Calculate hourly power consumption using:

**V: U.S. gallons**

**(1 gallon = 3.7854 liters)**

Pmax: max power consumption per hour in watts.

## Test Method:

Keep thermostat and circulation pump on, unplug other loads. Set low recirculation cycle, cover with thermal cover. Maintain water temp for 4 hrs, note meter power. After room temp drops to CEC standard, record current meter power. After 72 hours, record power again. Compare actual power with theoretical value to check compliance.

### Test Period:

April 1, 2023 - April 15, 2023.

### Test Object:

HEB770 semi-finished product  
(R&D Order No. RD00125  
Product Serial No. RD0001250002).

**Note:** Theoretical CEC value is affected by water injected into prototype, leading to variations due to human errors.







## Energy efficiency

### 1. High density foam hardcover

Lockable cover with high density insulating foam stops heat loss from from the outside atmosphere.

### 2. Edge Foam

Unique edge foam insulation contributes to the creation of a heat-tight, draft-free system.

### 3. No gap cabinet

Edge sealing technology, to ensure the enclosing cabinet and the insulation layer seamless, no heat diffusion.

### 4. Thermo shield

3-layer insulation on the sides of the cabinet ensures outdoor durability, even in extreme heat exposure.

### 5. Cabinet Insulation

The cabinet features a 25mm rubber insulation layer coated with reflective aluminum foil, aiding in heat retention.

### 6. Solid ABS base

Sturdy ABS base defends against pests, weather, and damage, featuring a cost efficient insulation system.

### 7. Floor insulation

Effectively reduces heat loss and infiltration by reflecting and blocking heat transfer.



Stay cosy and save big!

Enjoy your spa experience year-round with the assistance of air-sourced heat pump



Save up to  
**75%**

Year-round usability while reducing electricity expenses by up to 75%

Are you looking for the most energy efficient way of heating your spa? Compared to gas or electric heaters, an air sourced heat pump uses a small amount of energy to generate a large amount of heat output. This energy efficient alternative can save you up to 75% on heating costs.

Apart from heating your spa more efficiently in the cooler months, it also works to cool your water down to a more refreshing temperature in summer.

*\*Available on upgraded option only.*





## Antibacterial filtration

Highly efficient antibacterial filters guarantee the utmost cleanliness and safety of your spa water.



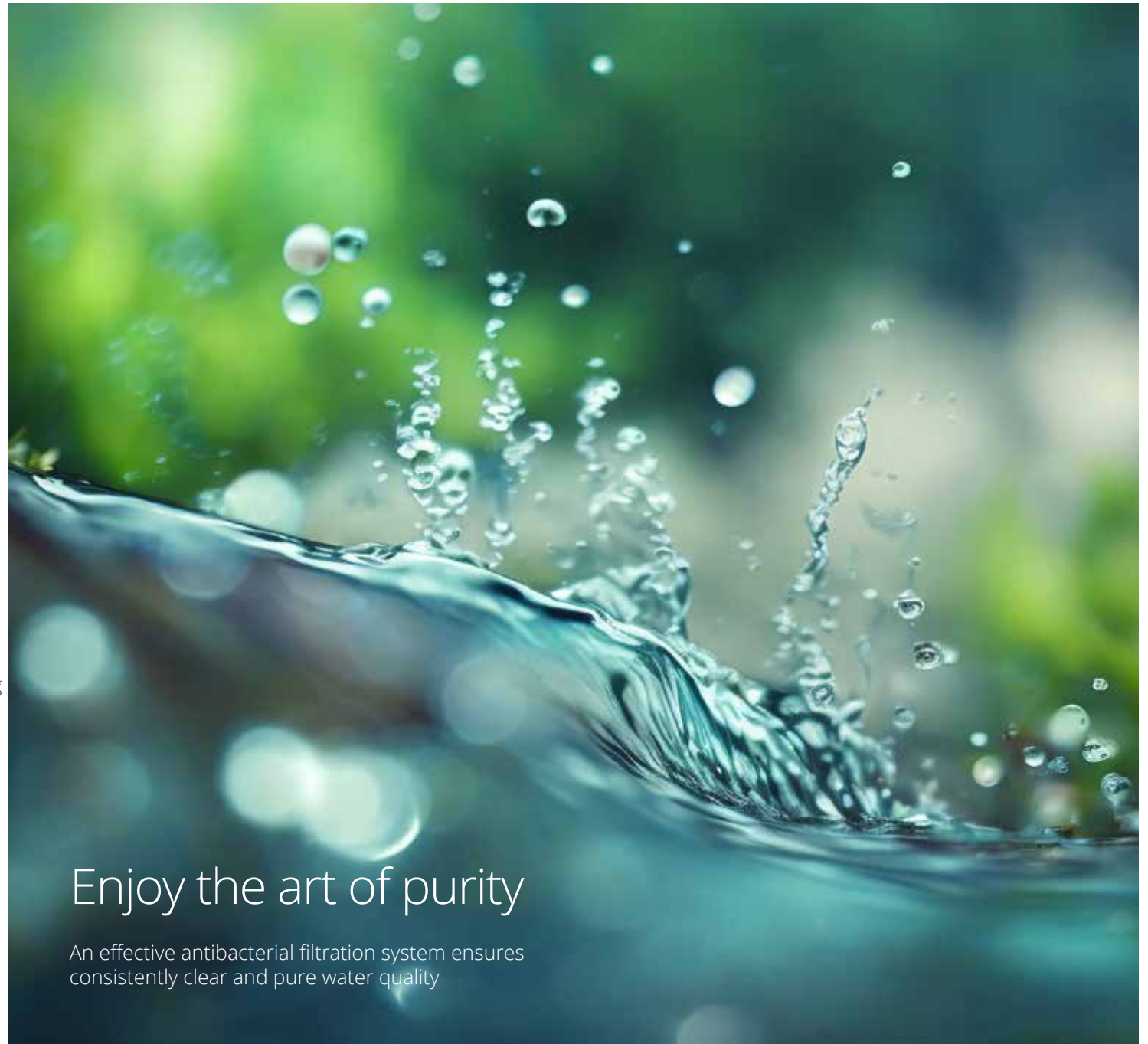
## Ozone sanitation and NSF food grade hoses

Our NSF-certified food-grade hoses resist chemicals and contaminants, ensuring water in spas remains clean without potential chemical leaching, such as bisphenol A (BPA). When combined with our Ozone sanitation system, it further reduces the water balancing products required to maintain spa sanitation.



## Energy-efficient

Powered by a high-performance pump, our system ensures low energy consumption and efficient energy saving, allowing you to relax and enjoy your spa worry-free.



# Enjoy the art of purity

An effective antibacterial filtration system ensures consistently clear and pure water quality



## Easy control at your fingertips

Easily manage your spa using the SPATECH control system, which unlocks a multitude of possibilities for spa users. Engineered to function in diverse conditions, enhance the user experience with its unique color touchscreen interface.



### Effortless Wifi

Manage your spa functions remotely via smartphone or tablet, with WiFi and Bluetooth speakers, enabling control from anywhere.



### Touchscreen control

Due to its straight forward and effective setup choices, the touchscreen is intuitive and user-friendly, making it easily manageable for everyone.



### Heat pump control

6 modes let you take full advantage of your heat pump to optimize your savings: Eco Heat, Smart Heat, Eco Auto, Smart Auto, Cool, and Electric.



### Energy saving modes

Choose from four efficient modes - standard, energy-saving, vacation, and sleep. Allowing you to easily manage operating expenses.



### Maintenance feedback

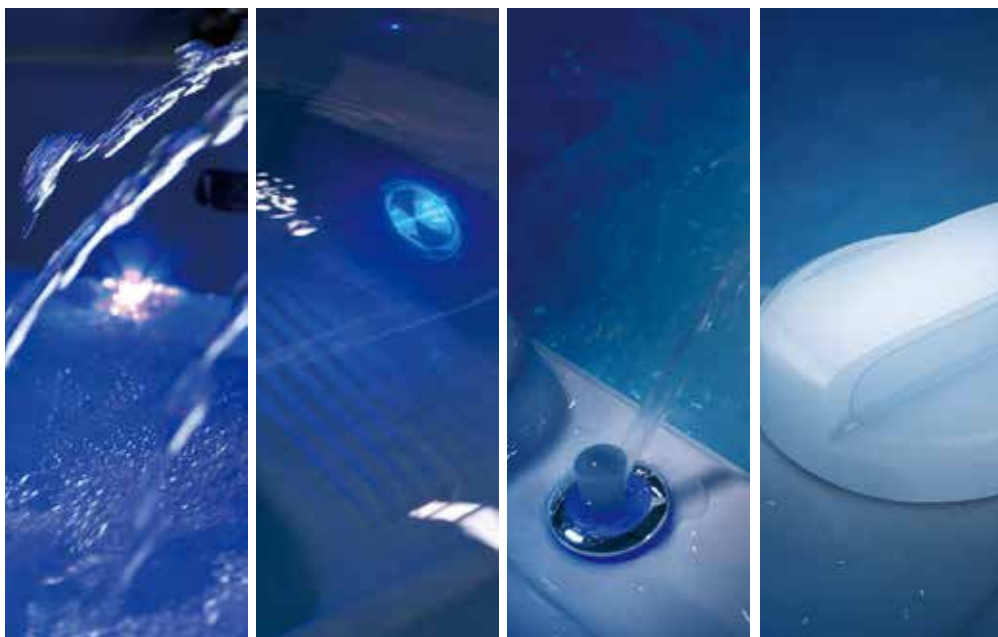
Customize maintenance reminder, which can automatically remind you to maintain your beloved hot tub in time according to your habits.



### Fault diagnosis

The Spatech control system provides a rapid fault diagnosis. Get direct feedback from your spa. Saving you maintenance costs.





## Ambient lighting features

Welcome to the extraordinary world of dream time lighting, we curate an ambiance that stirs your senses and sets the perfect stage for an unparalleled journey of relaxation.

## Waterlevel lights and large LED

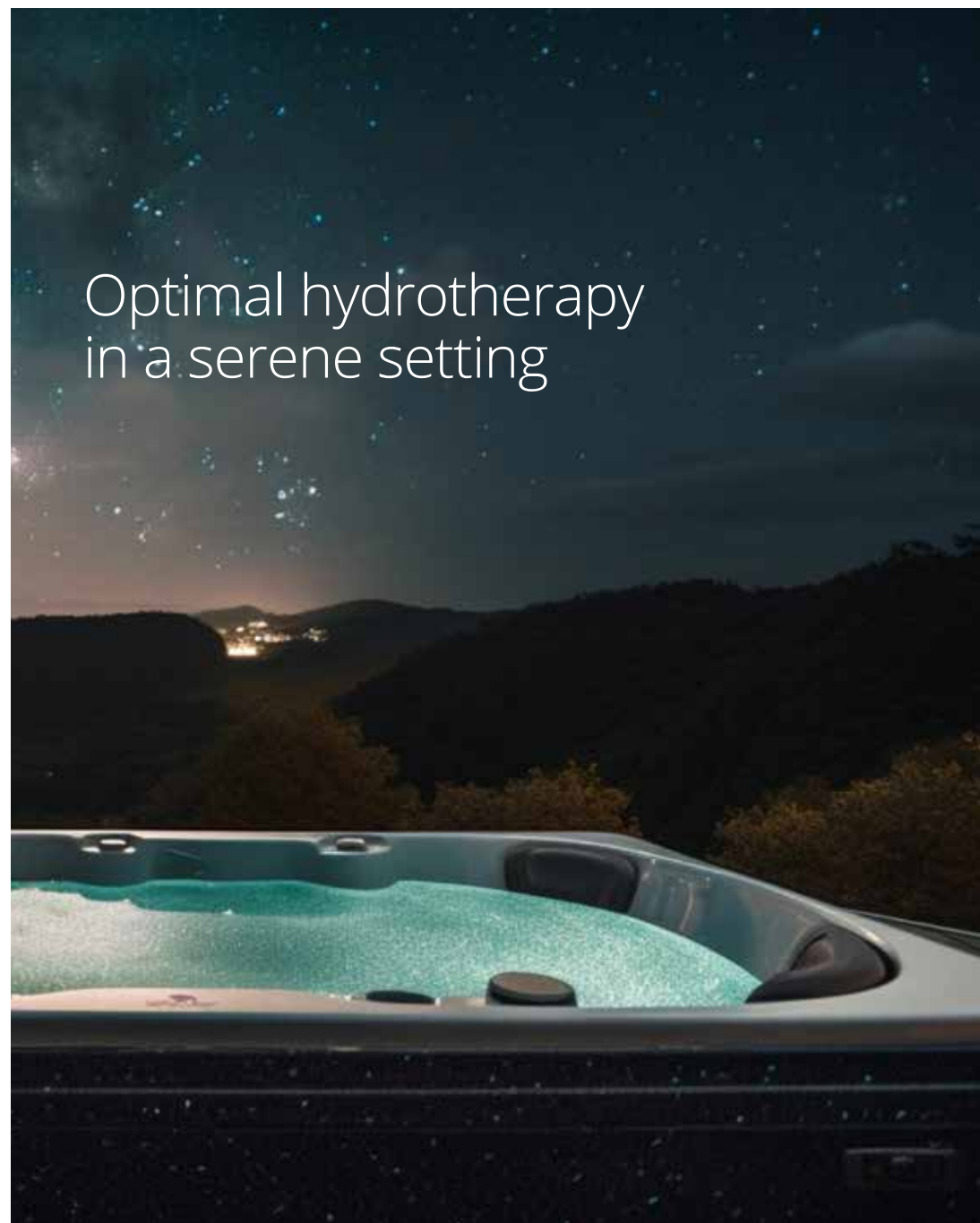
Delve into deeper realms of tranquility with our waterlevel lights & large LED, casting a mesmerising radiance beneath the surface, where worries dissipate, and serenity envelops you completely.

## Lifting fountain light

Embark on a journey of wonder as our lifting fountain light illuminates your path, elevating your connection with the elements. A magical dance ensues with every touch, effortlessly guiding you through a realm of boundless possibilities.

## Back-lit controls

Step into a world where dreams become a reality, where every moment celebrates pure enchantment. Let the enchanting ambiance envelop you, turning ordinary experiences into extraordinary memories.



Optimal hydrotherapy  
in a serene setting

# Tahiti

The Tahiti is a compact spa option that boasts an open 'hot tub' design and diverse massage experiences, catering to all your relaxation and hydrotherapy needs.



## Acrylic and Cabinet Options



Alpine White    Sterling Marbled    Ash Black Aluminium

## Specifications

Dimensions	2000 x 2000 x 820mm
Product Layout	7 Seats
Water Capacity	1040 L
Dry Weight	285 Kg
Power Required	15 Amp

## Water Care System

Filtration Pump	1 x 0.5HP PowerSaver
Sanitiser System	High-efficiency Mixed Ozone
Filtration	100sqft Antimicrobial

## Control System

Control System	Spatech CA 300
Control Panel	Spatech Colour Touchscreen
WiFi	Spatech C.Touch

## Lighting

Waterlevel, Large LED, Backlit Waterfall and Controls

## Insulation

Platinum Thermal Lock and Lockable Hard Cover

## Massage System      Classic Model

Massage Pump	1 x 3HP
Massage Jets	29
Preheated Air Pump	1 x 400W
Air Jets	14

## Optional

Bluetooth Stereo      \$

Date:      \$

*Price is valid for 30 days from above date.*



Touchscreen



Lighting



WiFi



Ozone



Lockable Hardcover



100sqft Filtration





# Hawaiian

The Hawaiian is a compact yet roomy single recliner spa designed for both hydrotherapy massage and leisure moments shared with family and friends.



## Acrylic and Cabinet Options



Alpine White   Sterling Marble   Ash Black Aluminium

## Specifications

Dimensions	2000 x 2000 x 820mm
Product Layout	4 Seats - 1 Recliner
Water Capacity	995 L
Dry Weight	265Kg Classic - 290Kg Hydro
Power Required	15 Amp Classic - 25 Amp Hydro

## Water Care System

Filtration Pump	1 x 0.5HP PowerSaver
Sanitiser System	High-efficiency Mixed Ozone
Filtration	100sqft Antimicrobial

## Control System

Control System	Spatech CA 300
Control Panel	Spatech Colour Touchscreen
WiFi	Spatech C.Touch

## Lighting

Waterlevel, Large LED, Backlit Waterfall and Controls

## Insulation

Platinum Thermal Lock and Lockable Hard Cover

## Massage System

	Classic Model	Hydro Model
Massage Pump	1 x 3HP	2 x 3HP
Massage Jets	26	33
Preheated Air Pump	1 x 400W	1 x 400W
Air Jets	12	12

## Optional

Bluetooth Stereo   \$

Date:   \$

*Price is valid for 30 days from above date.*



Touchscreen



Lighting



WiFi



Ozone



Lockable Hardcover



100sqft Filtration



# Hayman

The Hayman spa, a spacious mid-sized choice, features an open 'hot tub' style design and a range of massage options to fulfill your relaxation and hydrotherapy requirements.



## Acrylic and Cabinet Options



Alpine White    Sterling Marble    Ash Black Aluminium

## Specifications

Dimensions	2120 x 2120 x 920mm
Product Layout	7 Seats
Water Capacity	1235 L
Dry Weight	340 Kg
Power Required	25 Amp

## Water Care System

Filtration Pump	1 x 0.5HP PowerSaver
Sanitiser System	High-efficiency Mixed Ozone
Filtration	100sqft Antimicrobial

## Control System

Control System	Spatech CA 300
Control Panel	Spatech Colour Touchscreen
WiFi	Spatech C.Touch

## Lighting

Waterlevel, Large LED, Backlit Waterfall and Controls

## Insulation

Platinum Thermal Lock and Lockable Hard Cover

## Massage System      Hydro Model

Massage Pump	2 x 3HP
Massage Jets	42
Preheated Air Pump	1 x 400W
Air Jets	14

## Optional

Bluetooth Stereo      \$

Date:      \$

*Price is valid for 30 days from above date.*



Touchscreen



Lighting



WiFi



Ozone



Lockable Hardcover



100sqft Filtration





# Pacific

The Pacific is a spacious mid-sized spa accommodating up to 5 individuals. Offering various seating styles and massage options, it caters to all your relaxation needs.



## Acrylic and Cabinet Options



Alpine White    Sterling Marble    Ash Black Aluminium

## Specifications

Dimensions	2120 x 2120 x 920mm
Product Layout	4 Seats - 1 Recliner
Water Capacity	1195 L
Dry Weight	330 Kg
Power Required	25 Amp

## Water Care System

Filtration Pump	1 x 0.5HP PowerSaver
Sanitiser System	High-efficiency Mixed Ozone
Filtration	100sqft Antimicrobial

## Control System

Control System	Spatech CA 300
Control Panel	Spatech Colour Touchscreen
WiFi	Spatech C.Touch

## Lighting

Waterlevel, Large LED, Backlit Waterfall and Controls

## Insulation

Platinum Thermal Lock and Lockable Hard Cover

## Massage System      Hydro Model

Massage Pump	2 x 3HP
Massage Jets	39
Preheated Air Pump	1 x 400W
Air Jets	12

## Optional

Bluetooth Stereo      \$

Date:      \$

*Price is valid for 30 days from above date.*



Touchscreen



Lighting



WiFi



Ozone




Lockable Hardcover



100sqft Filtration





## Discover the healing power and benefits of Hydrotherapy

### Stress Relief

Soaking in a spa helps relax muscles, reduce tension, and alleviate stress. The warm water and massaging jets can calm both the body and mind.

### Muscle Relaxation

The combination of heat, buoyancy, and hydrotherapy jets can help soothe sore muscles, ease muscle tension, and improve flexibility.

### Improved Sleep

Using a spa before bedtime can promote better sleep by helping the body relax and inducing a deeper, more restful sleep cycle.

### Stimulated Healing

The combination of heat and hydrotherapy can accelerate healing processes by improving circulation and reducing inflammation.

### Lower Blood Pressure

Regular use of a spa may help lower blood pressure levels, especially when combined with relaxation techniques.

### Better Circulation

The heat from a spa dilates blood vessels, leading to improved circulation, which can benefit heart health and overall cardiovascular function.

### Pain Relief

Spa hydrotherapy can aid in reducing chronic pain conditions such as arthritis, fibromyalgia, and muscle soreness by increasing blood flow and releasing endorphins, the body's natural painkillers.

### Weight Management

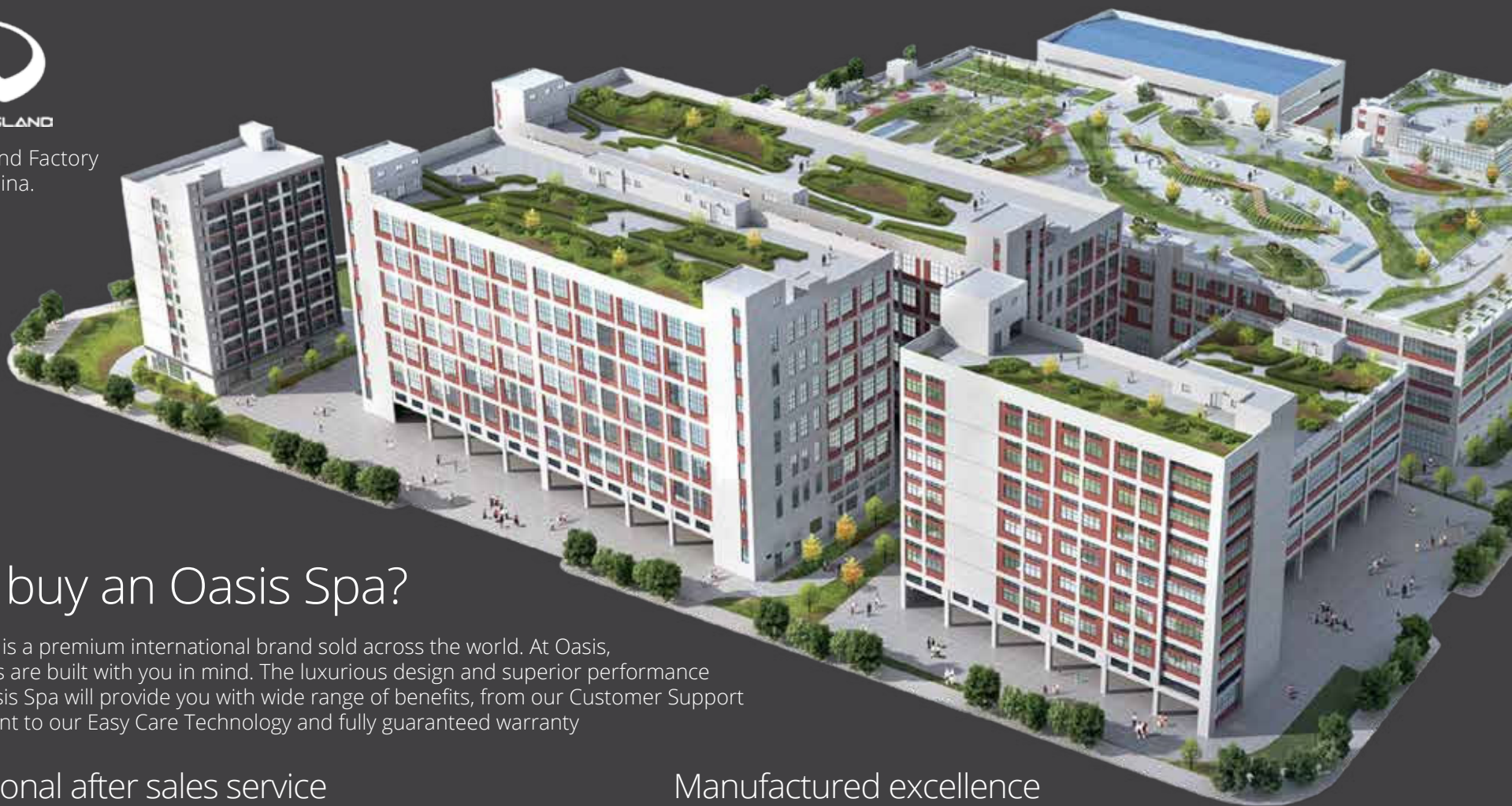
While not a direct weight loss tool, using a spa can complement weight management efforts by aiding in relaxation, potentially reducing stress-related eating, and promoting better sleep.





CRYSTAL ISLAND

Crystal Island Factory  
Foshan, China.



## Why buy an Oasis Spa?

Oasis Spas is a premium international brand sold across the world. At Oasis, our designs are built with you in mind. The luxurious design and superior performance of your Oasis Spa will provide you with wide range of benefits, from our Customer Support Commitment to our Easy Care Technology and fully guaranteed warranty

### Exceptional after sales service

We offer robust logistics, storage, and transportation services in Australia, UK, France, Netherlands, Austria, and more. Our dedicated team is committed to providing ongoing support and guidance, ensuring your satisfaction and peace of mind well beyond your purchase

### Manufactured excellence

Produced by Crystal Island, Oasis Spas along with other major world renowned spa brands originate from their state of the art 150,000m<sup>2</sup> facility. This facility delivers up to 300,000 spas and swim spas to approximately 46 countries. As the largest spa production facility globally, coupled with Oasis Spas local support network, it ensures the purchase of the best possible product.



[www.oasis spas.com.au](http://www.oasis spas.com.au)



All specifications relating to products included in the catalogue are true and correct at time of printing. Some specifications of the advertised products are subject to change without notice. Spa dimensions can have a variation of 100mm.